

Xtreme4fx

Multi Display Controller

Quick Start Guide

Electronic Modular Solutions Limited
Kendal House
20 Blaby Road
South Wigston
Leicestershire, LE18 4SB
UK
Tel: +44 (0) 116 2775730
Email: sales@ems-imaging.com
www.ems-imaging.com



Product	Xtreme4fx Display Controller Quick Start Guide
Classification	Released
Version Number	1.1.0

Thank you for purchasing the EMS Xtreme4fx multi display controller. The aim of this document is to quickly guide you through the process of initial setup. For detailed instructions consult the 4fx User Guide downloadable from www.ems-imaging.com



Xtreme4fx QUICK START GUIDE

+ STEP 1 CONTENTS

CONTENTS

- The 4fx Multi Display Controller
- 1 x Mains power cable
- USB 2.0 cable Type A to Type B
- Quick Start Guide
- HDMI Locks: x 2 with the DisplayPort model
x 6 with the HDMI model
- 2 x Rack mount attachments
- 6 x Rack mount screws
- Xtreme4fx Wall Designer Software Application and the 4fx User Guide - downloadable

If any of the items are missing, please contact EMS for further instructions.

The 4fx is not supplied with input and output cables therefore please ensure you have the relevant cables to hand to complete your project.

+ CERTIFICATION

This device complies with part 15 of the FCC Rules. Operation is subject to the following two conditions: (1) This device may not cause harmful interference, and (2) this device must accept any interference received, including interference that may cause undesired operation.



EU – Class A Declaration of Conformity

EMS Ltd declares that the 4fx complies with the essential requirements and other relevant provisions of Directives 2004/108/EC, 2006/95/EC and 2011/65/EU.

A copy of our Declaration of conformity is available on request.

Electronic Modular Solutions Limited
Kendal House
20 Blaby Road
South Wigston
Leicestershire, LE18 4SB
UK

A full list of product compliance certifications can be found in the product User Guide

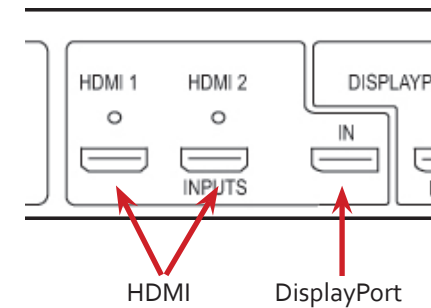
+ COPYRIGHT STATEMENT

© EMS Ltd., England, 2016

EMS Limited claims copyright on this documentation. No part of this documentation may be reproduced, released, disclosed, stored in any electronic format, or used in whole or in part for any purpose other than stated herein without the express permission of EMS Limited.

Whilst every effort is made to ensure that the information contained in this Quick Start Guide is correct, EMS Limited make no representations or warranties with respect to the contents thereof, and do not accept liability for any errors or omissions. EMS reserves the right to change specification without prior notice and cannot assume responsibility for the use made of the information supplied. All registered trademarks used within this documentation are acknowledged by EMS Limited.

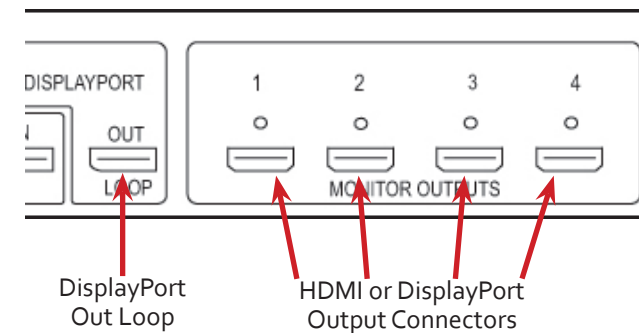
+ STEP 2 CONNECT THE INPUTS



Connect your input source to one of the 3 input connectors on the rear of the 4fx. You can connect up to 3 input sources, 2 x HDMI and 1 x DisplayPort.

Ensure cables are inserted correctly, it is recommended that locking cable connectors are used.

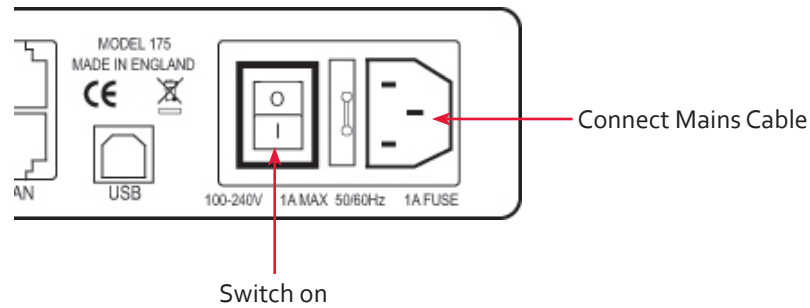
+ STEP 3 CONNECT OUTPUTS



Connect the monitor cables to the monitor output connectors on the rear of the 4fx, you can connect up to 4 monitors to a single 4fx unit. Ensure the cables are inserted correctly, it is recommended that locking connectors are used.

The DisplayPort Out Loop is used to when connecting multiple 4fx units.

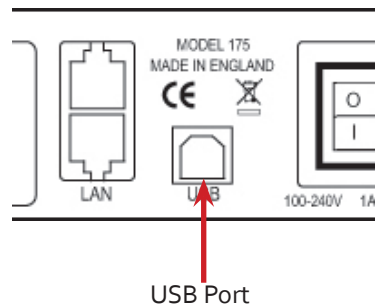
+ STEP 4 CONNECT MAINS CABLE



When the power is switched on the 4fx will boot and the LEDs on the front panel will flash for up to 15 seconds. Should the LED's continue to flash see the troubleshooting section.

+ STEP 5 CONNECTING TO A PC

To successfully configure the 4fx, first install the 4fx Wall Designer application on your PC by running the install program

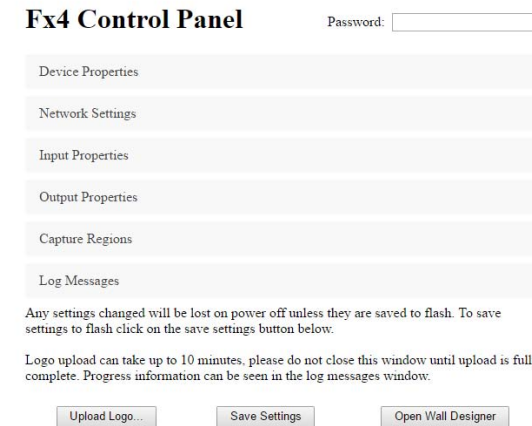


When the 4fx has booted, connect it to your PC using the USB cable provided. The 4fx unit is a plug and play device, Wall Designer will detect it when the layouts are configured.

The 4fx can also be configured via a Network, see Step 6.

+ IP CONTROL PANEL

The 4fx has a control panel that can be accessed via an IP connection, simply type in the IP address of the 4fx into an Internet browser and a control panel for that particular 4fx is displayed. The control panel allows you to change properties and settings, manually define cropping regions, upload your particular logo or open the 4fx Wall Designer application.



+ TROUBLESHOOTING

Display Screens Turn Red

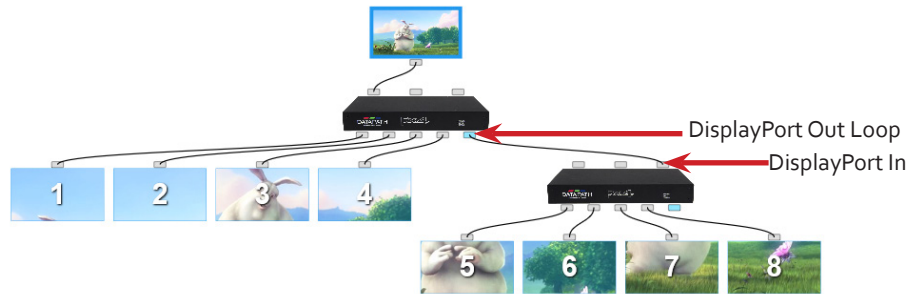
If all the display screens turn red, this indicates that there is an issue with HDCP compliance. Check both the input source and the monitors are HDCP compliant.

Front Panel LED Lights

On start-up all three lights will flash, after a few seconds the flashing should stop and the power light stays on permanently. If the light continues to flash this indicates that the 4fx requires upgrading. See User Guide for details on how to upgrade your 4fx.

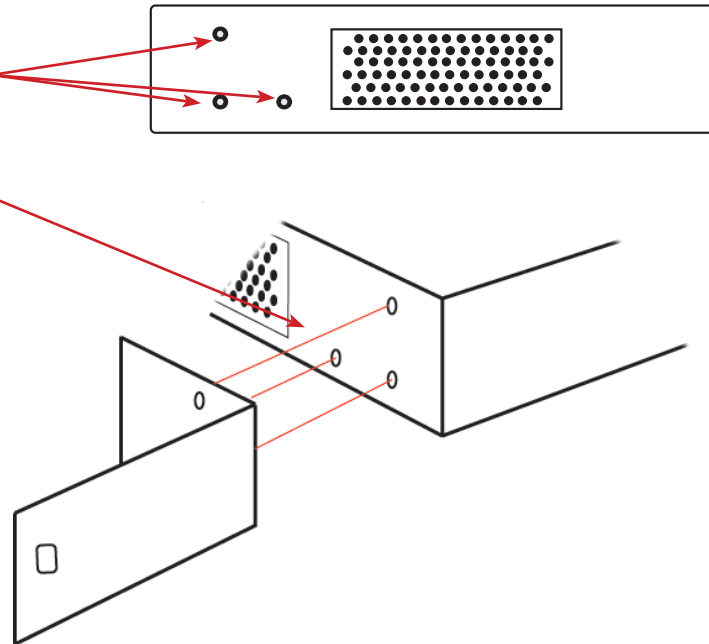
+ STEP 9 MULTIPLE DEVICES

Where more than four outputs are required, (the example below shows eight) the **Auto Config 4fx** function will determine the most logical way to connect all devices. To daisy chain a second 4fx, use a DisplayPort cable (not supplied) to connect the DisplayPort Out Loop on the first 4fx to the DisplayPort Input on the second 4fx.



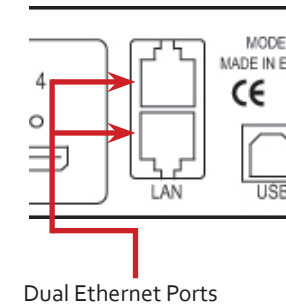
+ STEP 10 RACK MOUNTING (OPTIONAL)

Remove the stud screws on the side of your 4fx and secure the rack mounts using the screws provided



+ STEP 6 CONFIGURE VIA A NETWORK

The 4fx has dual ethernet ports to allow users to add the device to their network. Only one 4fx in any chain requires connection to the physical LAN as ethernet loop through is supported on the second LAN Port, meaning multiple devices can be connected.



Connect the 4fx to a network using the top LAN connector then open Wall Designer and create your display layout. At the point where you associate the virtual device with a physical device the list will display all 4fx's currently connected to the network either directly or daisy chained.

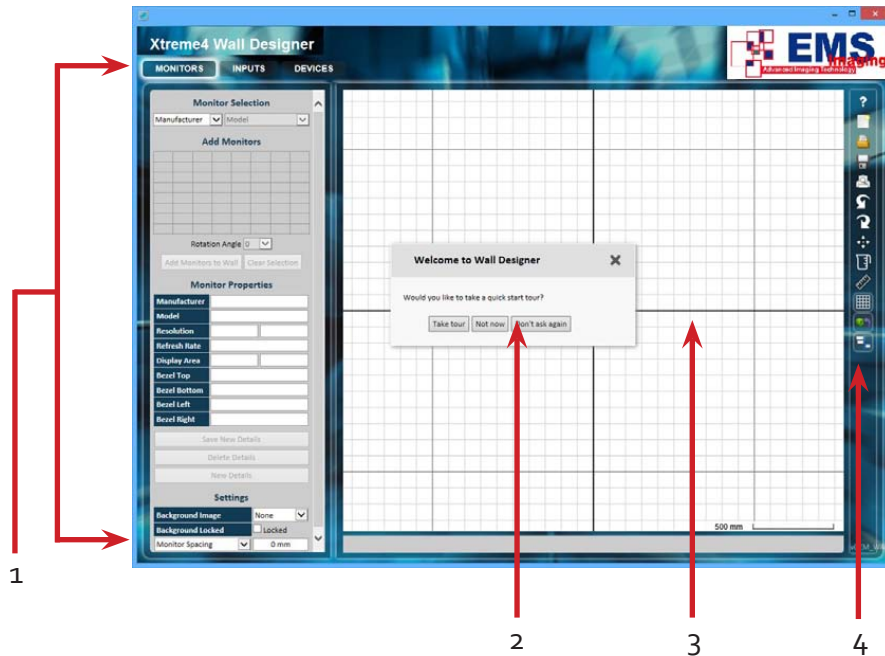
Click on the virtual device to display its properties, the **Device Properties** can be changed in the same way as if connecting via USB. Once any changes have been made click on **Apply Settings** to save.

See the 4fx User Guide for information regarding network settings.

+ STEP 7 Xtreme4fx Wall Designer

Start | All Programs | Wall Designer |

When Wall Designer is opened, the following dialogue is displayed:

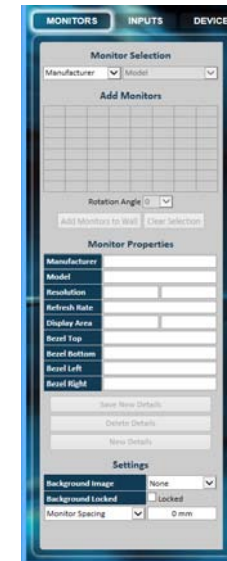


1	Operation Modes: Select monitors, inputs and configure devices
2	Quick Tour Dialogue
3	Virtual Canvas
4	Toolbar

It is highly recommended that when using Wall Designer for the first time, all users take the Quick Start Tour.

+ STEP 8 OPERATION MODES

Monitors



Select the monitor manufacturer from the drop down list on the left, then select the model.

Choose the number of monitors by clicking and dragging in the **Add Monitors** grid.

Select a background to enhance the Virtual Canvas

Click **Add Monitors to Wall** then open the **Inputs** tab

Inputs



Set up your input sources to be displayed on your monitors. Click on the **Create** button and select a sample source for a preview of what the display wall will look like.

Devices



Configure hardware devices by clicking on **Auto-configure 4fx**. Once you are satisfied with the configuration, right click on the virtual device in the main window and associate it with the physical device connected to your computer or on your network.

To complete the device configuration, click on the **Apply Settings** button.