

EMS VigiControl

Video Data Wall Controller Software

VigiControl is a Windows application program enabling easy configuration and setup of the XtremeVision, Vigilant and Vigilant - X series of video / data wall controllers.

VigiControl displays the entire wall layout in its local application window. The position and size of each window on the video wall is displayed in the application window. The user can interactively move and size the application windows. The user interface may be displayed on a network connected Windows PC as well as on the display wall itself or even on an extra control screen connected to the controller. The number of networked operators is not restricted by VigiControl.

Video Data Wall Controller Software



VigiControl Video / Data Wall Controller Software

Wall Control Features

- Control standard Windows® application programs (layout, positioning etc..)
- Control of Video capture, XtremeRGB window properties
- Control of VxSwitch cards in stand alone mode
- VigiControl can be operated remotely on any PC via a network connection.*
- Screen ordering utility
- Save and re-call layout templates*
- Windows screen labelling
- Bezel Masking
- Supports Crestron Controllers
- Command line interface for custom applications
- VigiControl Split Windows - For Security and CCTV Systems

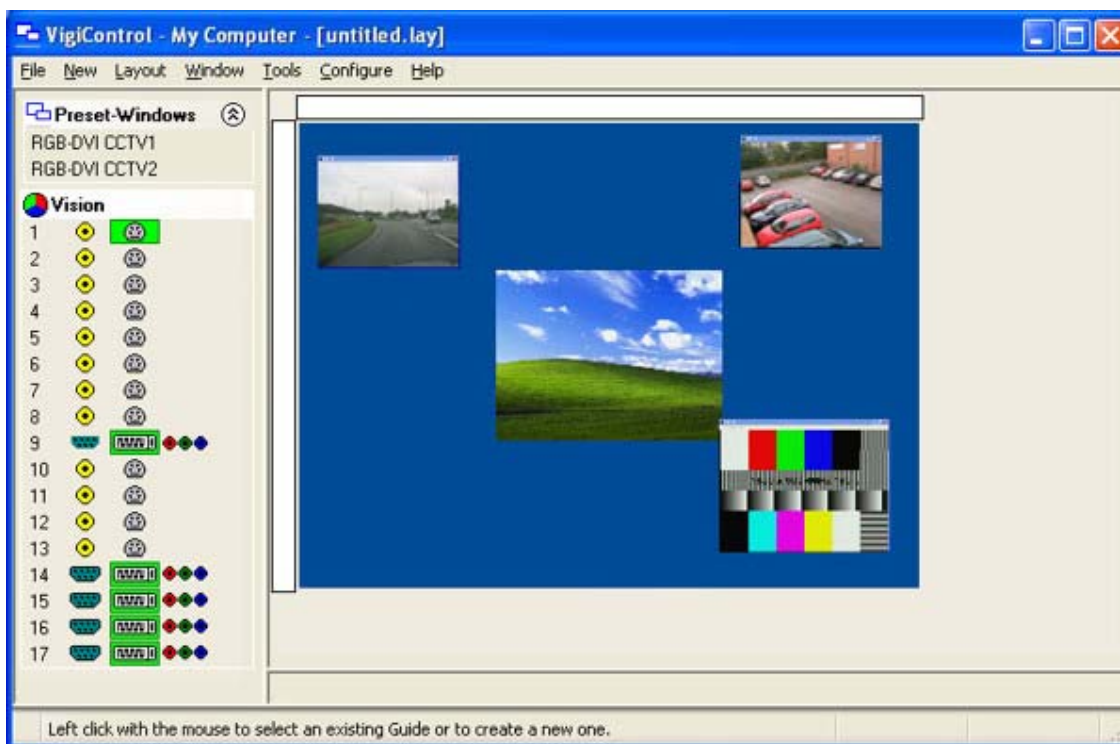
EMS VigiControl

Video Data Wall Controller Software

VigiControl displays the desktop of the Video Wall Server that is being controlled. It enables you to launch and organize your PC application windows across a network on another machine or locally on the same machine and also remotely display video content from our range of XtremeRGB video capture cards.

You can use VigiControl to interactively move, size and position application windows, and control XtremeRGB windows by using the Windows Properties sheet. VigiControl also has a guide and grid function to aid the positioning of windows. VigiControl allows you to save specific wall layouts as .lay files enabling them to be re-called when required. Multiple video wall layouts can be saved and re-called.

Vigicontrol "server" can also be accessed via the Local Area Network. The VigiControl client software will need to be installed onto each network PC for it to be able to control the Videowall.



The Icons displayed in the application toolbar identify which type of source is available to each input:


 = Composite source

 = S-Video source

 = DVI source

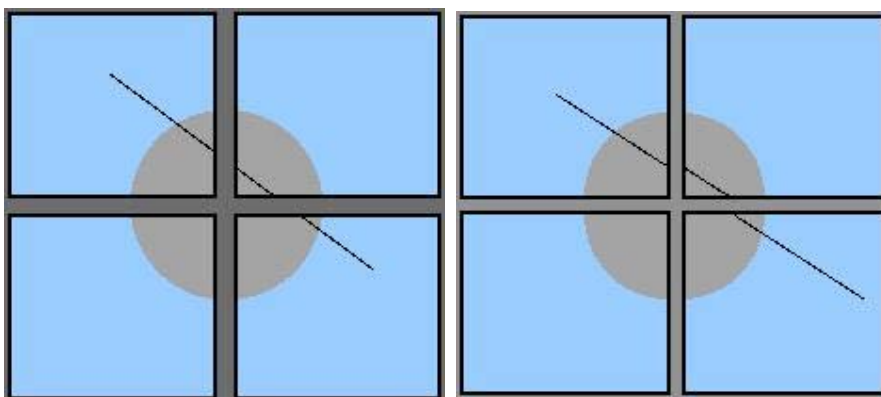
 = Analog source

 = Component source

If an icon has a green surround  this indicates the type of source currently being captured for that particular input.

Video Gaps

If a video overlay is displayed across multiple screens that have wide casings around the edges, strange effects maybe seen in the video images. Diagonal lines appear broken and circles appear elongated.



Original Video

Image Spread across screens with wide edges

With video gaps, the video is spread across the gaps between the screens so that the lines are straight and the circles remain circular. Parts of the video are lost in the gaps

Input Labels

The video overlay input label allows you to allocate specific labels; each input can be given more than one label.

Depending on how many graphics cards you have installed will determine how many input labels you can create.

EMS VigiControl

Video Data Wall Controller Software

Using The Split Windows Function With CCTV/Security System

VigiControl now offers the facility to split RGB and DVI capture windows into separately cropped and scaled sub windows.

The cropping and on screen display settings for sub windows can be individually modified and then saved as presets.

Inputs can be split into a maximum of 16 separate sub windows. This is useful for applications where specific areas of a captured input need to be individually displayed and controlled, such as security and medical imaging systems.

The output of the rendering system or source PC is captured by the EMS XtremeRGB capture card and displayed as a single window.

The application Split Screen function is used to divide an active RGB/DVI window into sub-windows. A maximum number of 16 sub-windows can be created.



Each sub-window will display a cropped portion of the captured source. When split, the sub-windows will all be the same size and occupy the same total screen size as the window being split.



The sub-windows can then be re-sized and cropped using the application Windows Properties sheet. Each sub-window can be positioned anywhere on the display wall. Ideal for use in CCTV and Security control rooms, .

EMS VigiControl

Video Data Wall Controller Software



VigiControl is available in three versions:

- VigiControl - Free Version .
- VigiControl-PRO-SK - Licensed version with a software key code.
- VigiControl-PRO-HK - Licensed version with a hardware USB key (Dongle) .

VigiControl Software: Product Control List

XtremeVision PCIe, Quad channel Graphics Controller.

XtremeRGB – series of DVI/HDMI/VGA/Component and Composite/Svideo capture cards

VxSwitch16 / VxSwitch32 - Cross-Point Matrix Switch Card

Older products

Vigilant & Vigilant-X, PCI, series of Quad Ch . Graphics controller

PhynxRGB – single /dual channel VGA/ RGB capture card

Avant Series of multi channel Video overlay Cards,

VIM-6/16 - Video input Module (4 input Overlays)

EMS VigiControl

Video Data Wall Controller Software



For details on how to purchase the EMS products contact our sales department
sales@ems-imaging.com



Electronic Modular Solutions Limited

Kendal House, 20 Blaby Road, S. Wigston, Leics., LE18 4SB,
England

Tel: +44 (0) 116 2775730

Fax: +44 (0) 116 2774973

Email: sales@ems-imaging.com

Web: www.ems-imaging.com